

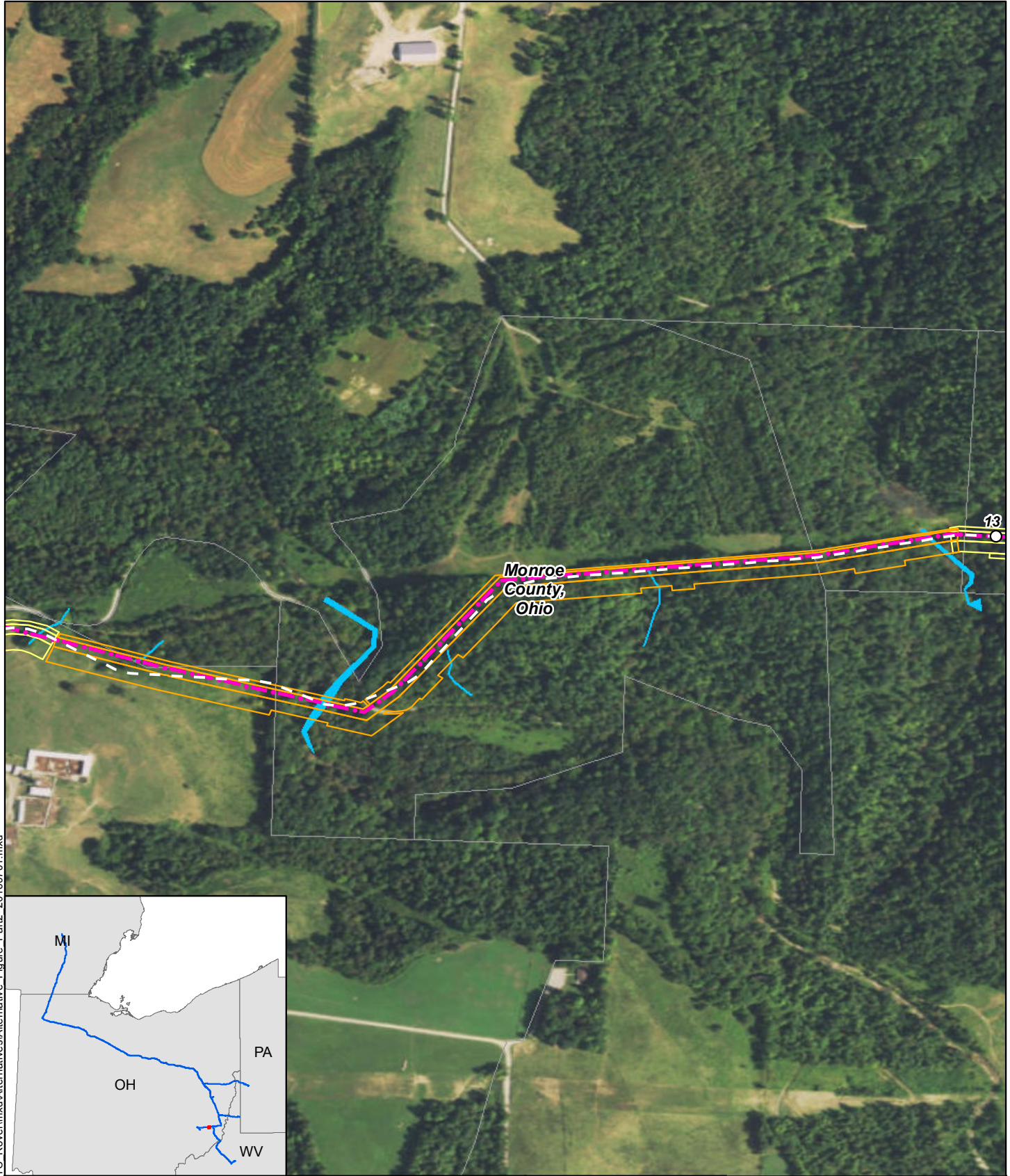
TABLE 10J. Summary of Route Variations Incorporated into the Proposed Route Between March 2016 and July 2016

Pipeline Segment	Milepost		Total Length (miles)		Approx. Maximum Separation (feet)	Variation ID	Reason for Route Variation	Additional Information
	Begin	End	March 2016 Route	June 2016 Route				
Supply Laterals								
Seneca Lateral	12.2	12.97	0.73	0.74	67	SE5	Realign centerline to parallel Leach XPress.	Figure 10J-64, Table 10J-64
	14.88	15.19	0.31	0.31	168	SE6	Realign centerline to avoid placing centerline in stream (S1TB-MO-153) channel.	Figure 10J-65, Table 10J-65

TABLE 10J-64
Comparison of the Seneca Lateral (March 2016) and Proposed Route (Variation SE5)

Environmental Factor	Unit	Seneca Lateral - MPs 12.2 - 12.97		Variance ¹
		Seneca Lateral March 2016	Proposed Route (Variation SE5)	
Total length:	miles	0.73	0.74	0.01
Length adjacent to existing rights-of-way	miles	0.37	0.37	0.00
Total construction right-of-way	acres	12.46	12.44	-0.02
Emergent wetlands	acres	0.00	0.00	0.00
Scrub-shrub wetlands	acres	0.00	0.00	0.00
Forested wetlands	acres	0.00	0.00	0.00
Forest	acres	9.36	9.47	0.11
Agricultural land	acres	2.70	2.65	-0.04
Open land	acres	0.41	0.32	-0.10
Permanent right-of-way	acres	4.42	4.49	0.06
Intermittent streams crossed	number	1	1	0
Perennial streams crossed	number	2	2	0
NRHP Listed Properties within 500 feet	number	0	0	0
Roads crossed	number	0	0	0
Railroads crossed	number	0	0	0
Tracts crossed	number	3	4	1
Residences within 50 feet of the centerline	number	0	0	0
NSAs (e.g., schools, hospitals) within 500 feet	number	0	0	0
Public lands crossed	miles	0.00	0.00	0.00
¹ Variance calculated by subtracting March 2016 route from Proposed Route.				

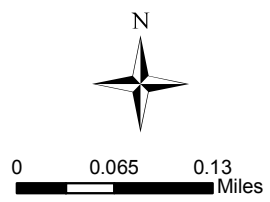
R:\Projects\GIS_2014\1219149_ETC_Rover\mxd\Alternatives\Alternative Figure_Part2_20160701.mxd



Monroe
County,
Ohio

13

- Mileposts
- - - March 2016 Route (Eliminated)
- Proposed Route
- Workspace (March 2016)
- Workspace (June 2016)
- Surveyed Wetlands
- Surveyed Streams
- Public and Protected Lands
- Tracts

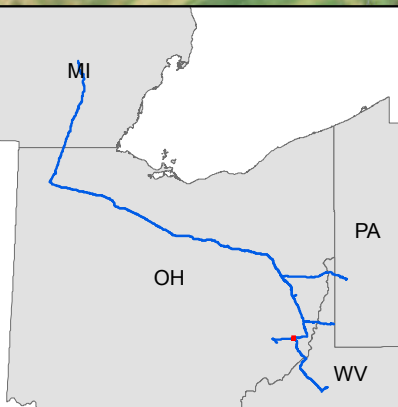


ROVER PIPELINE
An ENERGY TRANSFER Company

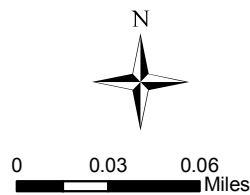
Rover Pipeline Project
Figure 10J-64
Seneca Lateral SE5


TABLE 10J-65
Comparison of the Seneca Lateral (March 2016) and Proposed Route (Variation SE6)

Environmental Factor	Unit	Seneca Lateral - MPs 14.88 - 15.19		Variance ¹
		Seneca Lateral March 2016	Proposed Route (Variation SE6)	
Total length:	miles	0.31	0.31	0.01
Length adjacent to existing rights-of-way	miles	0.31	0.16	-0.15
Total construction right-of-way	acres	5.17	5.05	-0.12
Emergent wetlands	acres	0.34	0.31	-0.03
Scrub-shrub wetlands	acres	0.00	0.00	0.00
Forested wetlands	acres	0.00	0.00	0.00
Forest	acres	3.71	3.97	0.26
Agricultural land	acres	1.23	0.95	-0.28
Open land	acres	0.20	0.12	-0.08
Permanent right-of-way	acres	1.97	1.90	-0.06
Intermittent streams crossed	number	1	1	0
Perennial streams crossed	number	0	0	0
NRHP Listed Properties within 500 feet	number	0	0	0
Roads crossed	number	0	0	0
Railroads crossed	number	0	0	0
Tracts crossed	number	2	2	0
Residences within 50 feet of the centerline	number	0	0	0
NSAs (e.g., schools, hospitals) within 500 feet	number	0	0	0
Public lands crossed	miles	0.00	0.00	0.00
¹ Variance calculated by subtracting March 2016 route from Proposed Route.				



- Mileposts
- March 2016 Route (Eliminated)
- Proposed Route
- Workspace (March 2016)
- Workspace (June 2016)
- Surveyed Wetlands
- Surveyed Streams
- Public and Protected Lands
- Tracts




ROVER PIPELINE
 An ENERGY TRANSFER Company
Rover Pipeline Project
 Figure 10J-65
 Seneca Lateral SE6