

## **VOLUME IIA**

### ***APPENDIX 10H***

#### ***Aboveground Facilities – June 2015***

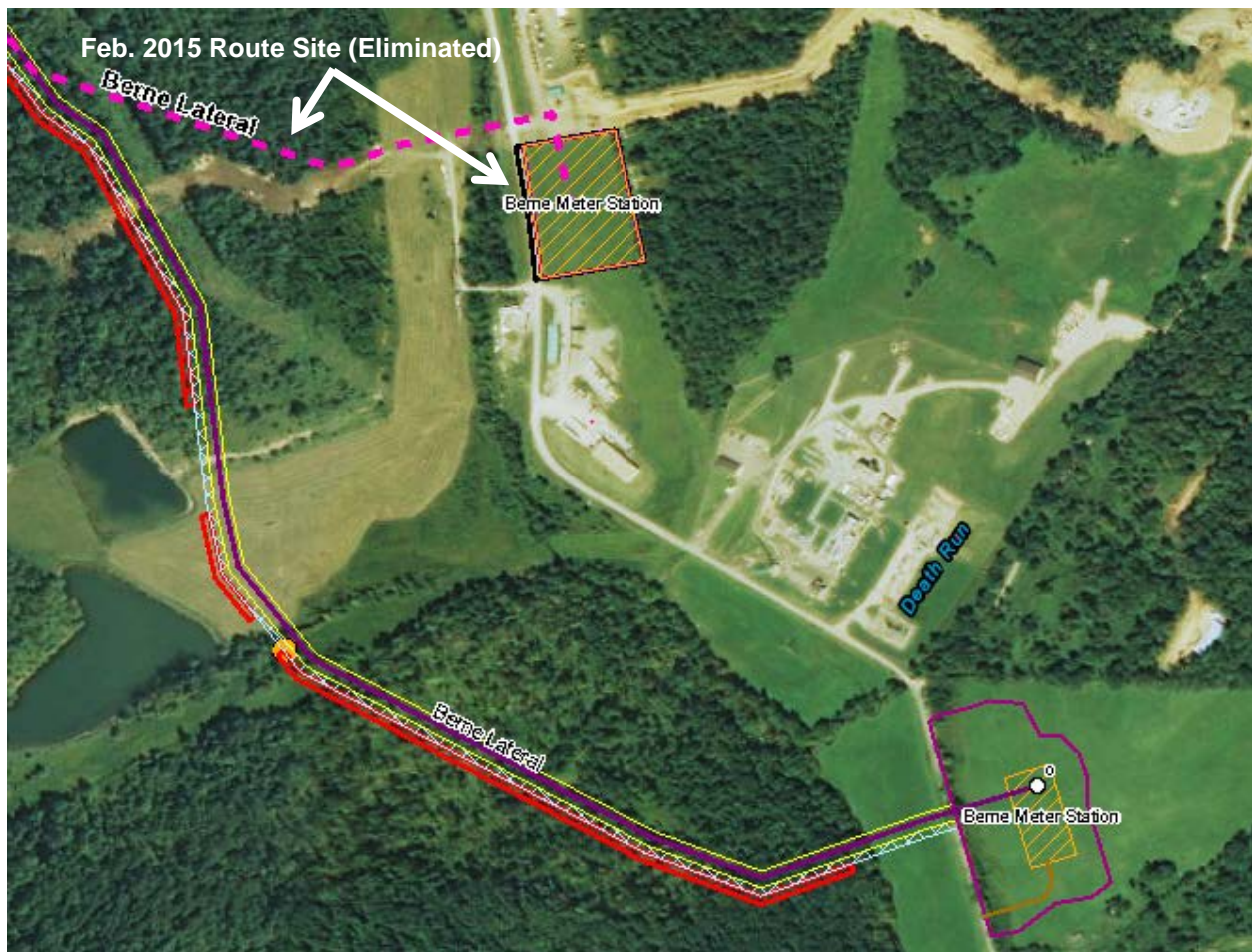
Figure 10H-1: Berne Meter Station Comparison of February 2015 and Proposed Sites .....	1
Figure 10H-2: Burgettstown Compressor Station Comparison of February 2015 and Proposed Sites .....	2
Figure 10H-3: Cadiz Tie-In Comparison of February 2015 and Proposed Sites .....	3
Figure 10H-4: Mainline Compressor Station 2 Comparison of February 2015 and Proposed Sites .....	4
Figure 10H-5: Consumers Energy Meter Station Comparison of February 2015 and Proposed Sites .....	5

**Figure 10H-1: Berne Meter Station  
Comparison of February 2015 and Proposed Sites**

Environmental Factor	Unit	Feb. 2015 Site (MP 0.0)	Proposed Site (Revised MP 0.0)	Variance <sup>1</sup>
Total site size: <sup>2</sup>	acres	3.09	9.39	6.3
Forest	acres	0.34	0.35	0.01
Agricultural land	acres	2.75	9.04	6.29
Open land	acres	0	0	0
Wetlands on site	acre	0	0	0
Streams on site	number	0	0	0
Within floodplain	--	No	No	-

<sup>1</sup> Variance calculated by subtracting February 2015 route from Proposed Route.

<sup>2</sup> All land use numbers based on land use acres as provided in Resource Report 8, Table 8A-2.



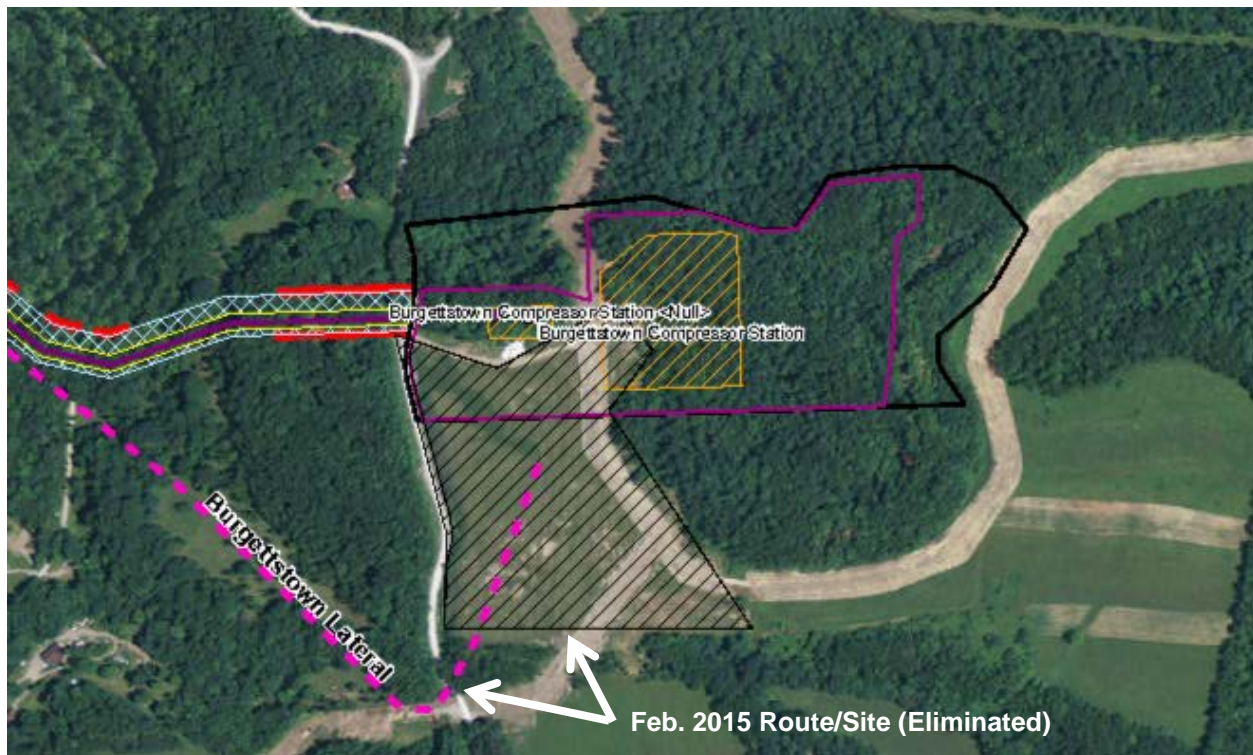
**Figure 10H-2: Burgettstown Compressor Station  
Comparison of February 2015 and Proposed Sites**

Environmental Factor	Unit	Feb. 2015 Site (MP 0.0)	Proposed Site (Revised MP 0.0)	Variance <sup>1</sup>
Total site size: <sup>2</sup>	acres	15.18	19.11	3.93
Forest	acres	0.83	15.28	14.45
Agricultural land	acres	0	0	0
Open land	acres	14.35	3.83	-10.52
Wetlands on site	acre	0	0.07 <sup>3</sup>	0.07
Streams on site	number	0	0	0
Within floodplain	--	No	No	-

<sup>1</sup> Variance calculated by subtracting February 2015 route from Proposed Route.

<sup>2</sup> All land use numbers based on land use acres as provided in Resource Report 8, Table 8A-2.

<sup>3</sup> Two small wetlands in eastern portion of site boundary. Will not be affected by construction.

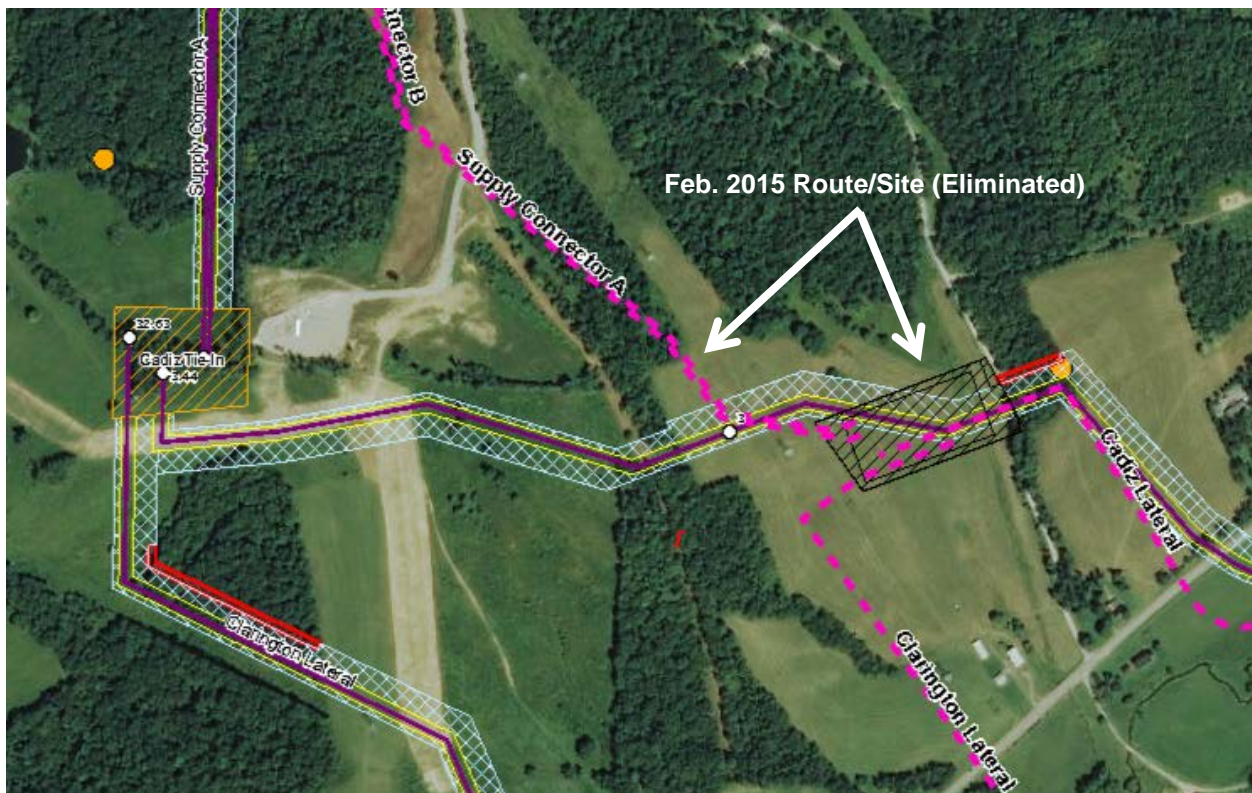


**Figure 10H-3: Cadiz Tie-In  
Comparison of February 2015 and Proposed Sites**

Environmental Factor	Unit	Feb. 2015 Site	Proposed Site	Variance <sup>1</sup>
Total site size: <sup>2</sup>	acres	4.06	4.01	-0.05
Forest	acres	0.14	3.1	2.96
Agricultural land	acres	3.05	0	-3.05
Open land	acres	0.87	0.91	0.04
Wetlands on site	acre	0	0	0
Streams on site	number	1	0	-1
Within floodplain	--	No	No	-

<sup>1</sup> Variance calculated by subtracting February 2015 route from Proposed Route.

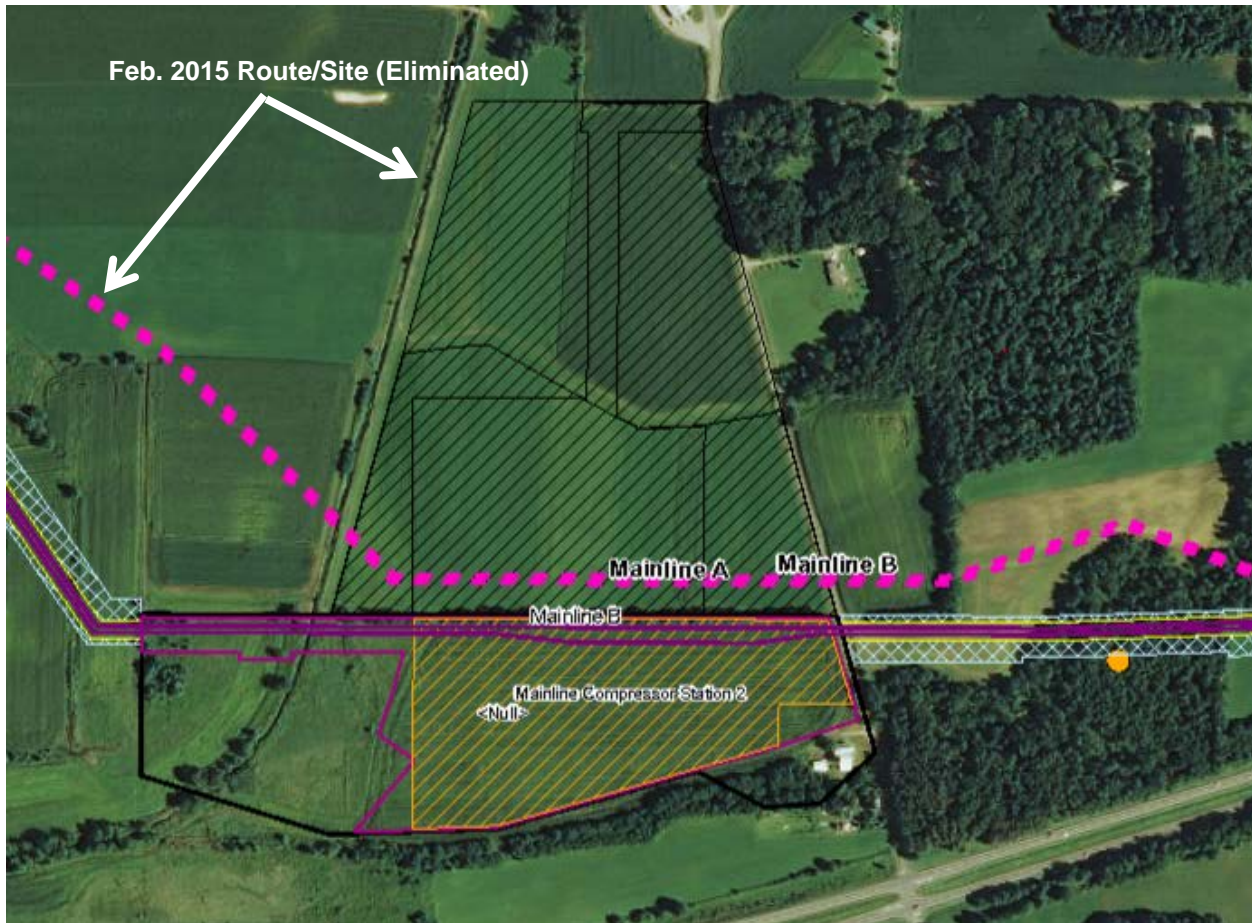
<sup>2</sup> All land use numbers based on land use acres as provided in Resource Report 8, Table 8A-2.



**Figure 10H-4: Mainline Compressor Station 2  
Comparison of February 2015 and Proposed Sites**

Environmental Factor	Unit	Feb. 2015 Site (MP 77.3)	Proposed Site (MP 77.3)	Variance <sup>1</sup>
Total site size: <sup>2</sup>	acres	27.33	21.44	-5.89
Forest	acres	0	0.64	0.64
Agricultural land	acres	26.49	20.58	-5.91
Open land	acres	0.84	0.22	-0.62
Wetlands on site	acre	0.02	8.63 <sup>3</sup>	8.61
Streams on site	number	0	1 <sup>3</sup>	1
Within floodplain	--	No	No	-

<sup>1</sup> Variance calculated by subtracting February 2015 route from Proposed Route.  
<sup>2</sup> All land use numbers based on land use acres as provided in Resource Report 8, Table 8A-2.  
<sup>3</sup> Station facilities have been configured to avoid permanent impacts on wetlands and stream.

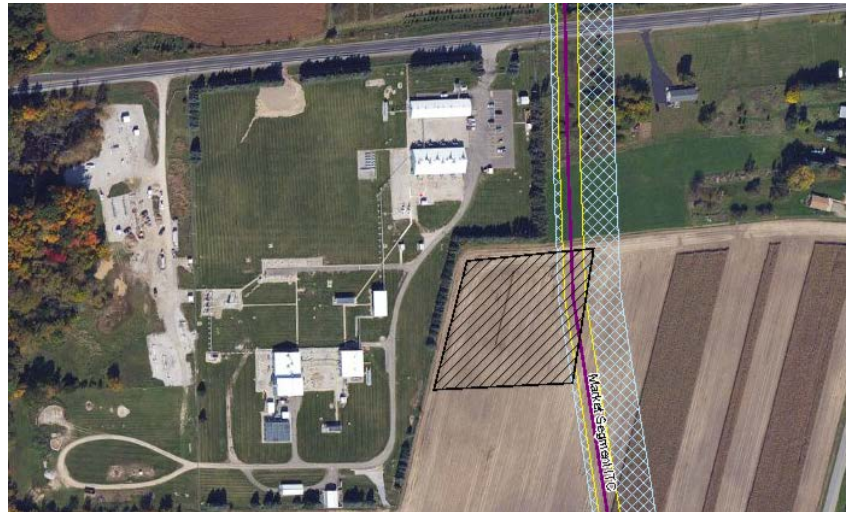


**Figure 10H-5: Consumers Energy Meter Station  
Comparison of February 2015 and Proposed Sites**

Environmental Factor	Unit	Feb. 2015 Site (MP 67.8)	Proposed Site (MP 75.0)	Variance <sup>1</sup>
Total site size: <sup>2</sup>	acres	2.26	4.58	2.32
Forest	acres	0	0.02	0.02
Agricultural land	acres	2.26	4.56	2.3
Open land	acres	0	0	0
Wetlands on site	acre	0	0.01 <sup>3</sup>	0.01
Streams on site	number	0	0	0
Within floodplain	--	No	No	-

<sup>1</sup> Variance calculated by subtracting February 2015 route from Proposed Route.  
<sup>2</sup> All land use numbers based on land use acres as provided in Resource Report 8, Table 8A-2.  
<sup>3</sup> Station facilities have been configured to avoid permanent or temporary impacts on wetlands.

**Feb. 2015 Site (Eliminated)  
Market Segment MP 67.8**



**Proposed Site  
Market Segment MP 75.0**

